




# ZONING MAP TAYLOR BOROUGH LACKAWANNA COUNTY, PA

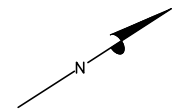
## LEGEND

-  BOROUGH BOUNDARY
-  PARCELS
-  STREAMS
-  \*FEMA FLOODPLAINS
-  ZONING BOUNDARIES
-  RAILROADS
-  BRIDGES

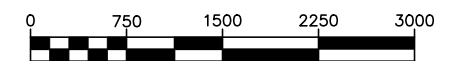
\*NOTE: FEMA FLOODPLAINS AS SHOWN ON THIS ZONING MAP WERE TAKEN FROM THE PREVIOUS ZONING MAP AND SHOULD NOT BE TAKEN AS EXACT OR COMPLETE. REFER TO THE LATEST FEMA FLOOD MAP FOR LOCATIONS OF FLOOD ZONES.

## ZONING DISTRICTS

- R-1 One-Family Residential
- R-1A One-Family Residential, Low Density
- R-2 General Residential
- R-3 General Residential & Community Commercial
- C-1 Neighborhood Commercial
- C-2 Community Commercial/CBD
- C-2A Community Commercial
- C-3 Heavy Commercial
- C-3A General Commercial
- M-1 Light Manufacturing
- M-2A General Manufacturing
- M-2 Heavy Manufacturing
- S-1 Open Space
- S-2 Conservation
- S-3 Special Purpose



### GRAPHIC SCALE



( IN FEET )  
1 inch = 1500 ft.

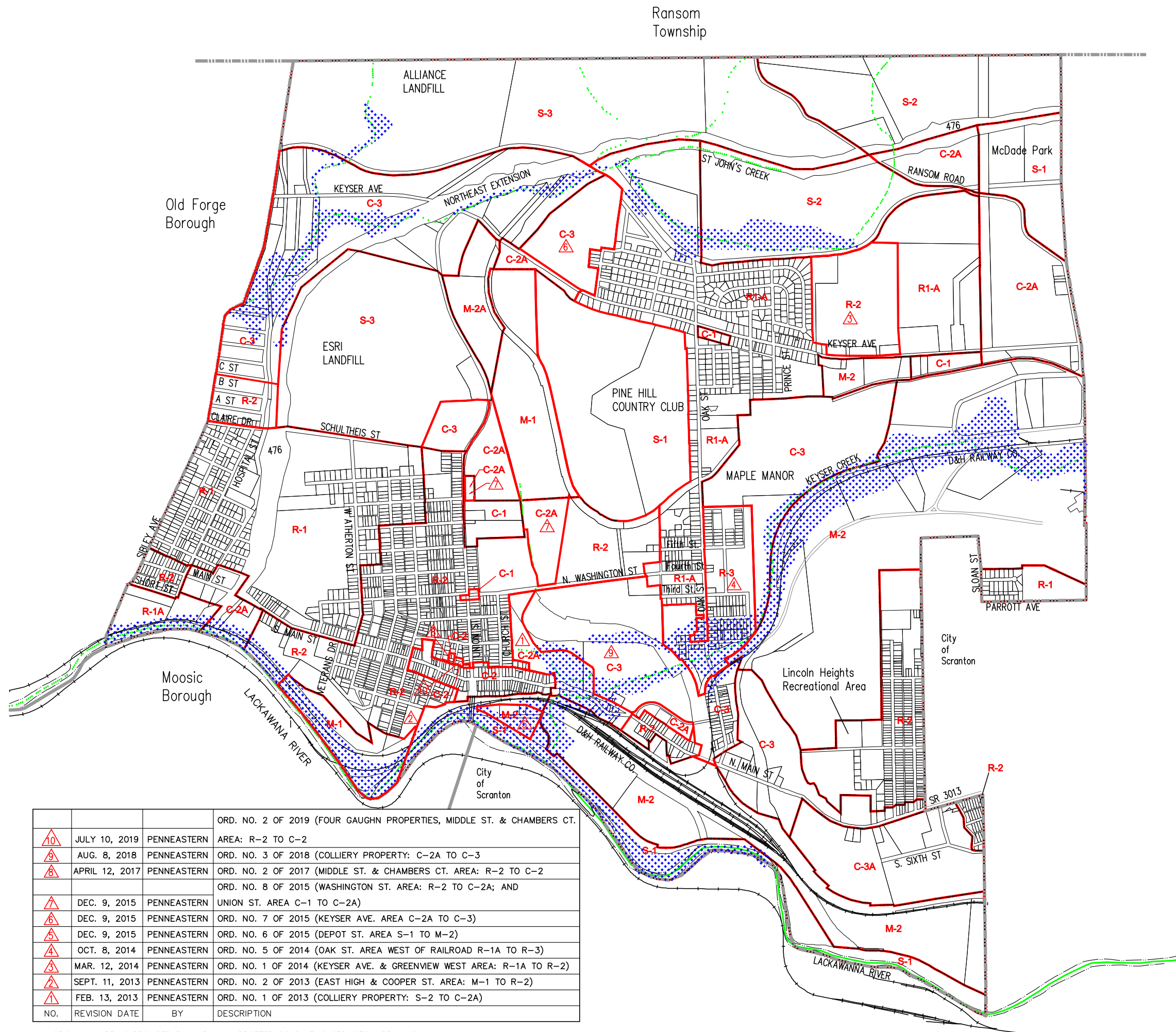
REVISED AND UPDATED BY:

**PennEastern  
Engineers, LLC**

165 NORTH WILKES-BARRE BOULEVARD WILKES-BARRE PENNSYLVANIA 18702

PHONE (570) 208-3130 FAX (570) 823-4727

JANUARY 2016



NO.	REVISION DATE	BY	DESCRIPTION
10	JULY 10, 2019	PENNEASTERN	ORD. NO. 2 OF 2019 (FOUR GAUGHN PROPERTIES, MIDDLE ST. & CHAMBERS CT. AREA: R-2 TO C-2)
9	AUG. 8, 2018	PENNEASTERN	ORD. NO. 3 OF 2018 (COLLIERY PROPERTY: C-2A TO C-3)
8	APRIL 12, 2017	PENNEASTERN	ORD. NO. 2 OF 2017 (MIDDLE ST. & CHAMBERS CT. AREA: R-2 TO C-2)
7			ORD. NO. 8 OF 2015 (WASHINGTON ST. AREA: R-2 TO C-2A; AND UNION ST. AREA C-1 TO C-2A)
6	DEC. 9, 2015	PENNEASTERN	ORD. NO. 7 OF 2015 (KEYSER AVE. AREA C-2A TO C-3)
5	DEC. 9, 2015	PENNEASTERN	ORD. NO. 6 OF 2015 (DEPOT ST. AREA S-1 TO M-2)
4	OCT. 8, 2014	PENNEASTERN	ORD. NO. 5 OF 2014 (OAK ST. AREA WEST OF RAILROAD R-1A TO R-3)
3	MAR. 12, 2014	PENNEASTERN	ORD. NO. 1 OF 2014 (KEYSER AVE. & GREENVIEW WEST AREA: R-1A TO R-2)
2	SEPT. 11, 2013	PENNEASTERN	ORD. NO. 2 OF 2013 (EAST HIGH & COOPER ST. AREA: M-1 TO R-2)
1	FEB. 13, 2013	PENNEASTERN	ORD. NO. 1 OF 2013 (COLLIERY PROPERTY: S-2 TO C-2A)

ORIGINAL MAPPING PROVIDED BY MARVIN A. BROTTOR CONSULTING SERVICES, APRIL 1989  
WITH GIS AND MAPPING SERVICES PROVIDED BY POCONO GIS, MAY 2008.